

PHYLUM ARTHROPODA

Characteristics of Arthropods

- 75 % of animals are arthropods
- Name means “jointed feet”
- Segmented body with appendages
- **Exoskeleton** =
 - External feature that supports and protects an animal’s body

Classes of Arthropods

- Crustacea
 - Lobsters, crabs, shrimp
- Arachnida
 - Spiders, scorpions, ticks
- Chilopoda
 - Centipedes
- Diplopoda
 - Millipedes
- Insecta
 - Flies, ants, wasps, beetles, butterflies, etc.



Class Insecta

Fun Facts

- Insect means “segmented”
- More than 1 million different KNOWN species of insects
- Largest order is the Beetles
 - One in every four animal species is a beetle
- **Ubiquitous** =
 - They can be found almost anywhere

Good and Bad

- Each kind of insect has a role to play in the world and each affects us in some way
 - Some transmit diseases
 - Mosquitoes
 - Others destroy crops
 - Locusts
 - But many pollinate flowers
 - Bees
 - Others lower pest populations
 - Parasitic wasps kill flies

Largest insect that ever lived

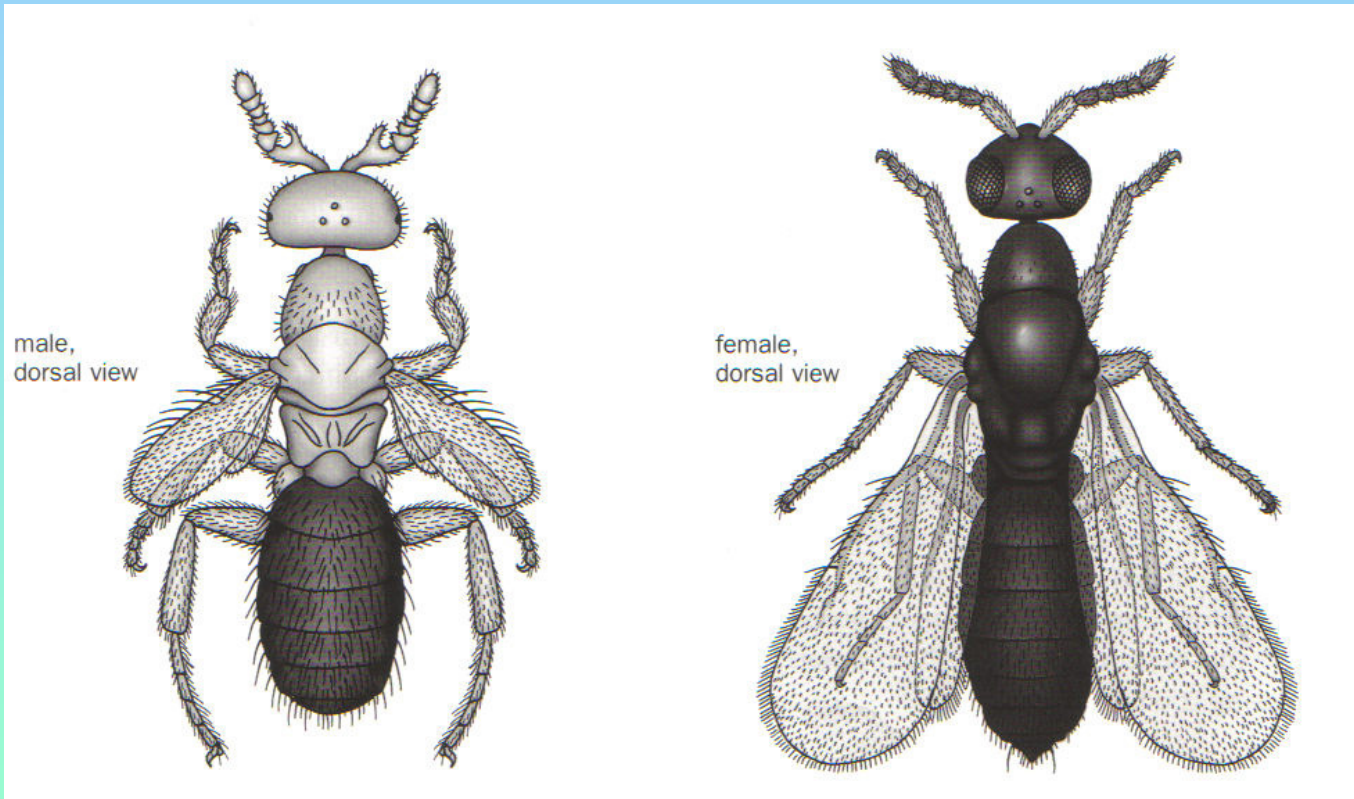
- Ancient dragonfly called Meganeura
- Wingspan of about 2 feet



Anatomy of Insects

- Three part body
 - Head
 - Thorax
 - Abdomen
- 3 pairs of jointed legs
- Compound eyes
- Two antennae
- Mandibles (jaws)
- Often have wings (attached to thorax)

Adult Parasitic Wasps (*Melittobia digitata*)



ERROR: undefined
OFFENDING COMMAND: Ecrl5Qq-
STACK: